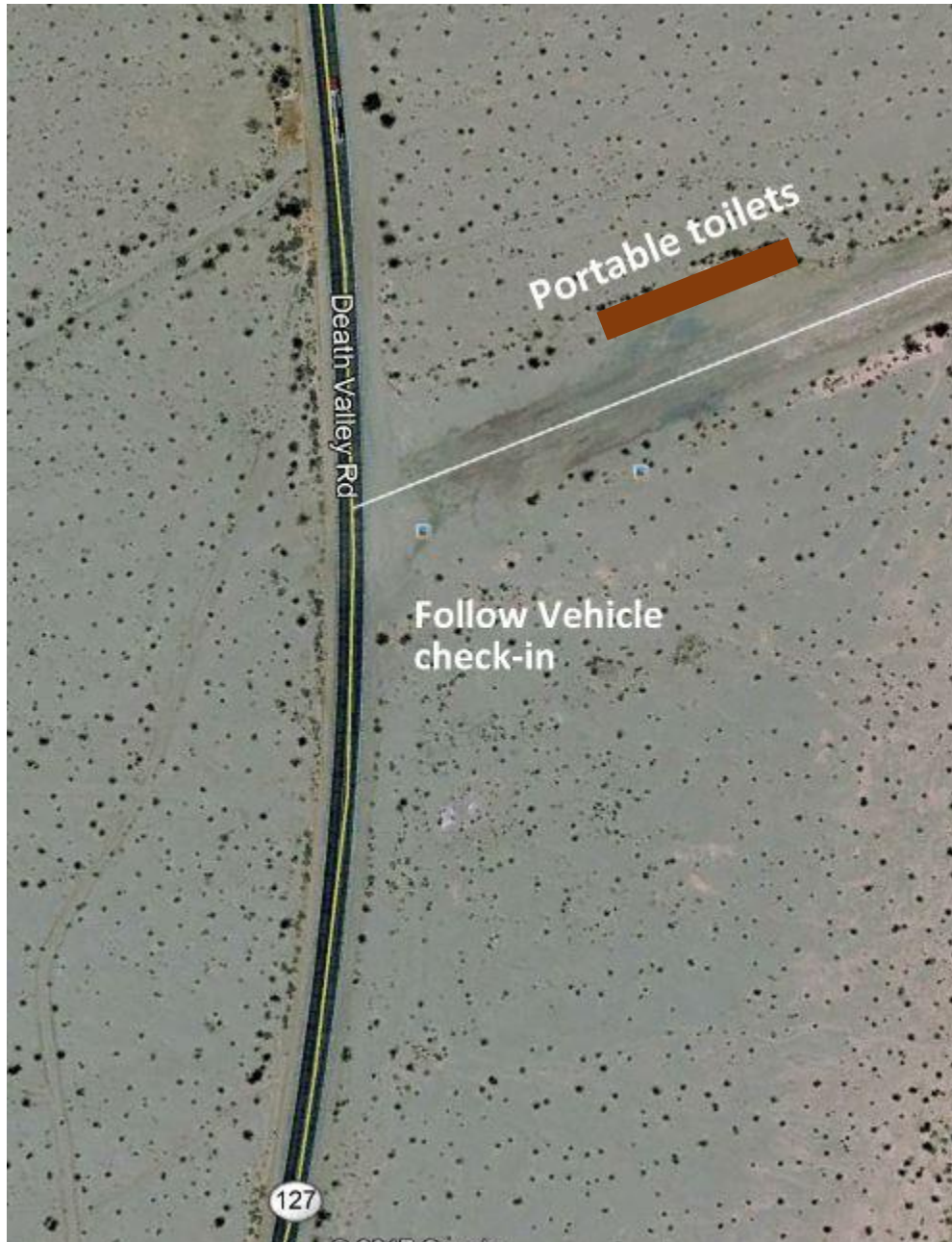


Follow Vehicle Check-in

GPS: 35° 33.193 N & 116° 11.360 W

On Highway 127, 21+ miles north of I-15



Start line

GPS: 35° 34.920 N & 116° 13.263 W

Stage distance: 5.4 miles



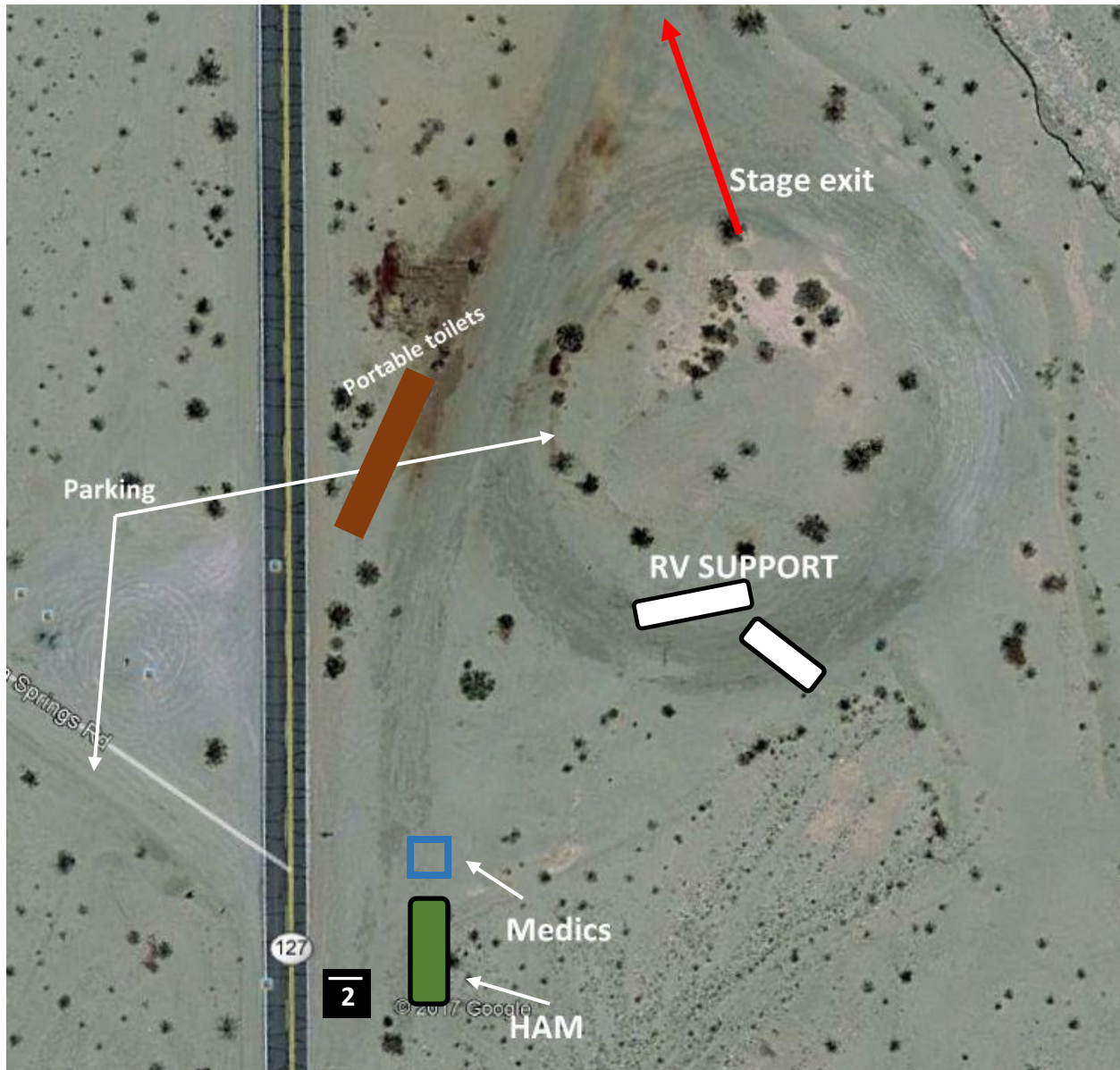
Start line is about 24.3 miles north of Baker and I-15 on Highway 127

Stage 2

GPS: 35° 37.963 N & 116° 17.429 W

Stage distance: 4.0 miles

Stage 2 begins on Highway 127 about 30 miles north of Baker

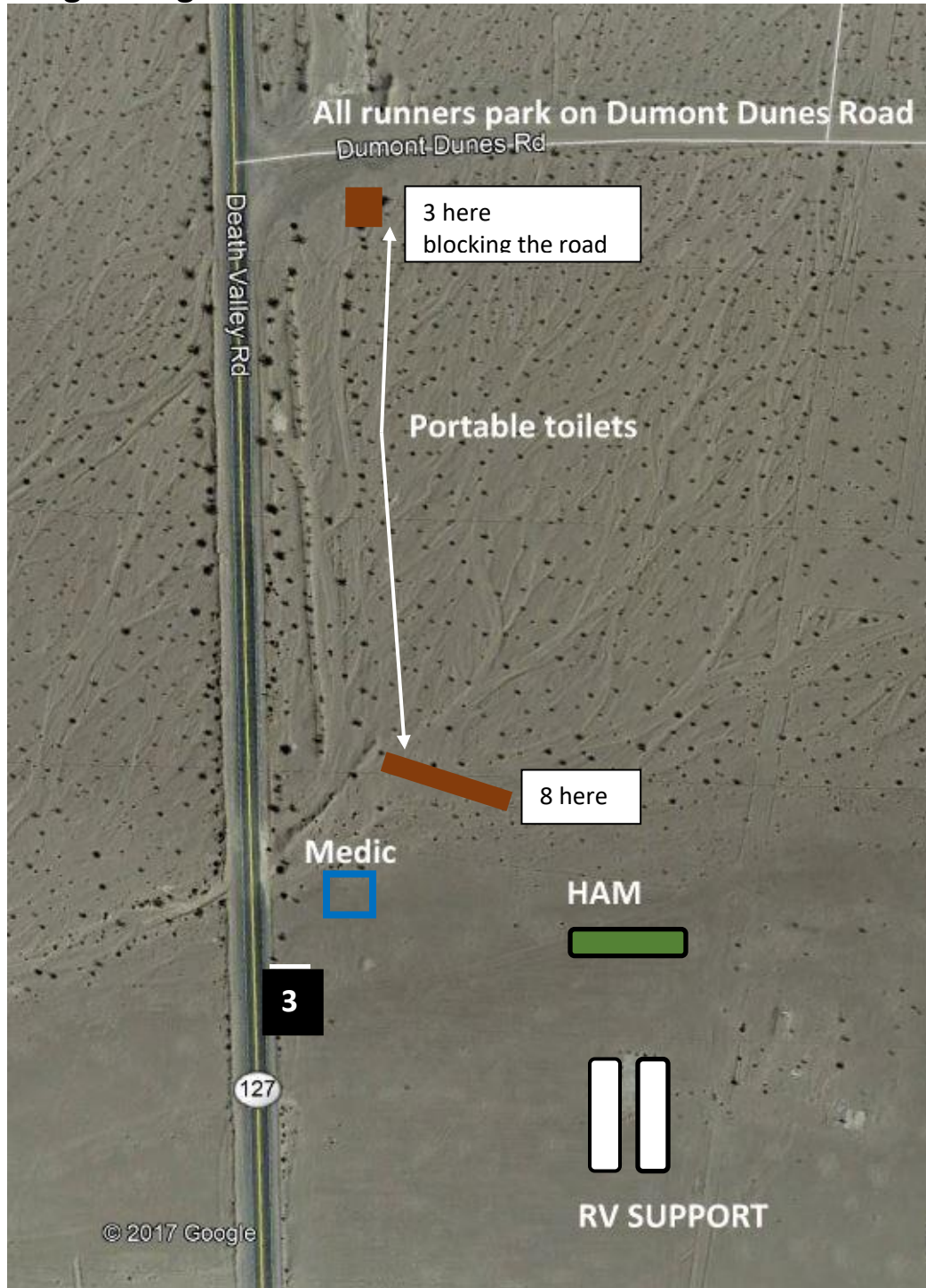


Stage 3

GPS: 35° 41.372 N & 116° 18.143 W

Stage distance: 4.2 miles

Stage 3 begins 34 miles north of Baker near Dumont Dunes Road

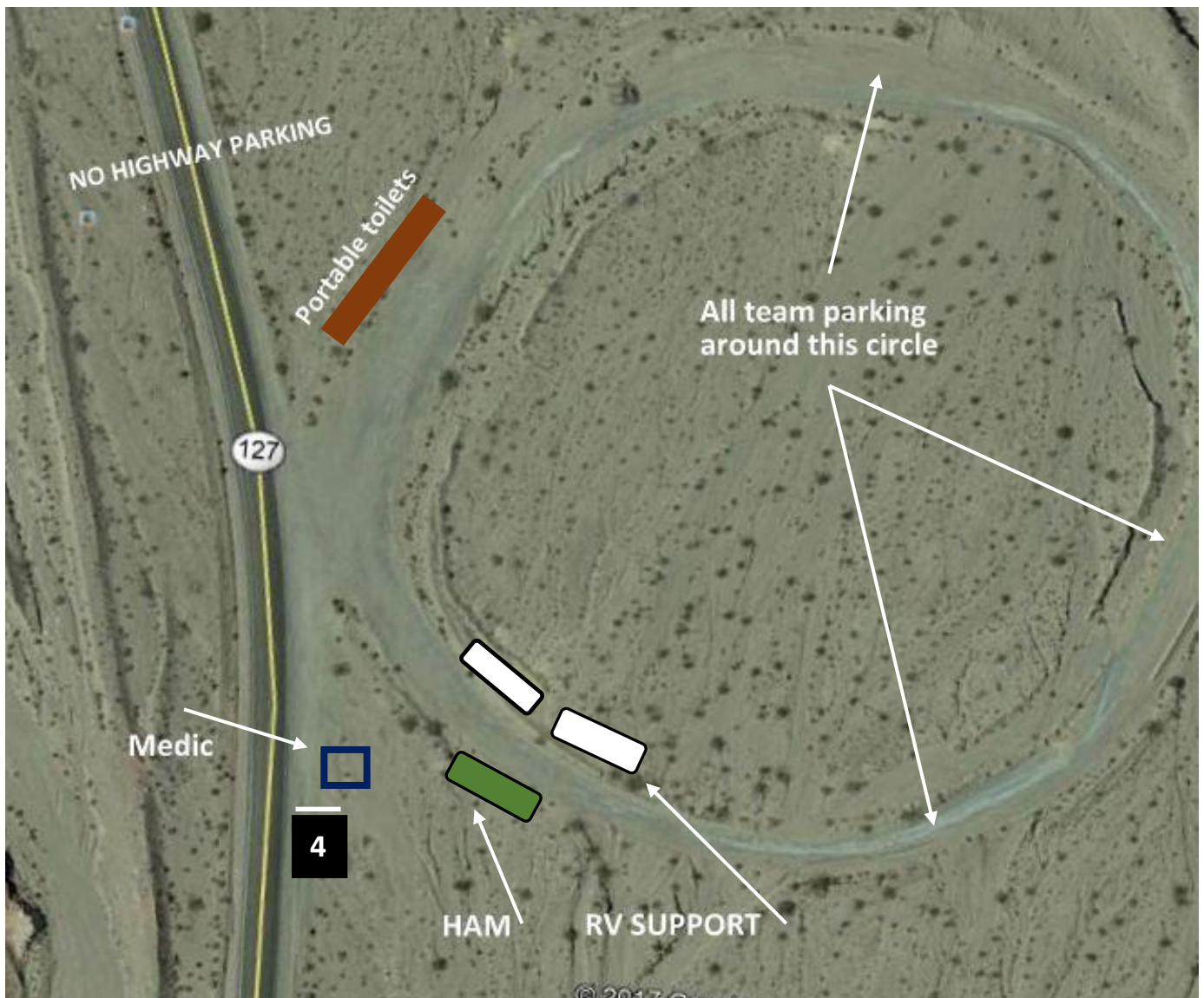


Stage 4

GPS: 35° 44.961 N & 116° 18.926 W

Stage distance: 5.1 miles

Stage 4 begins about 38 miles north of Baker and
about 18 miles south of Shoshone

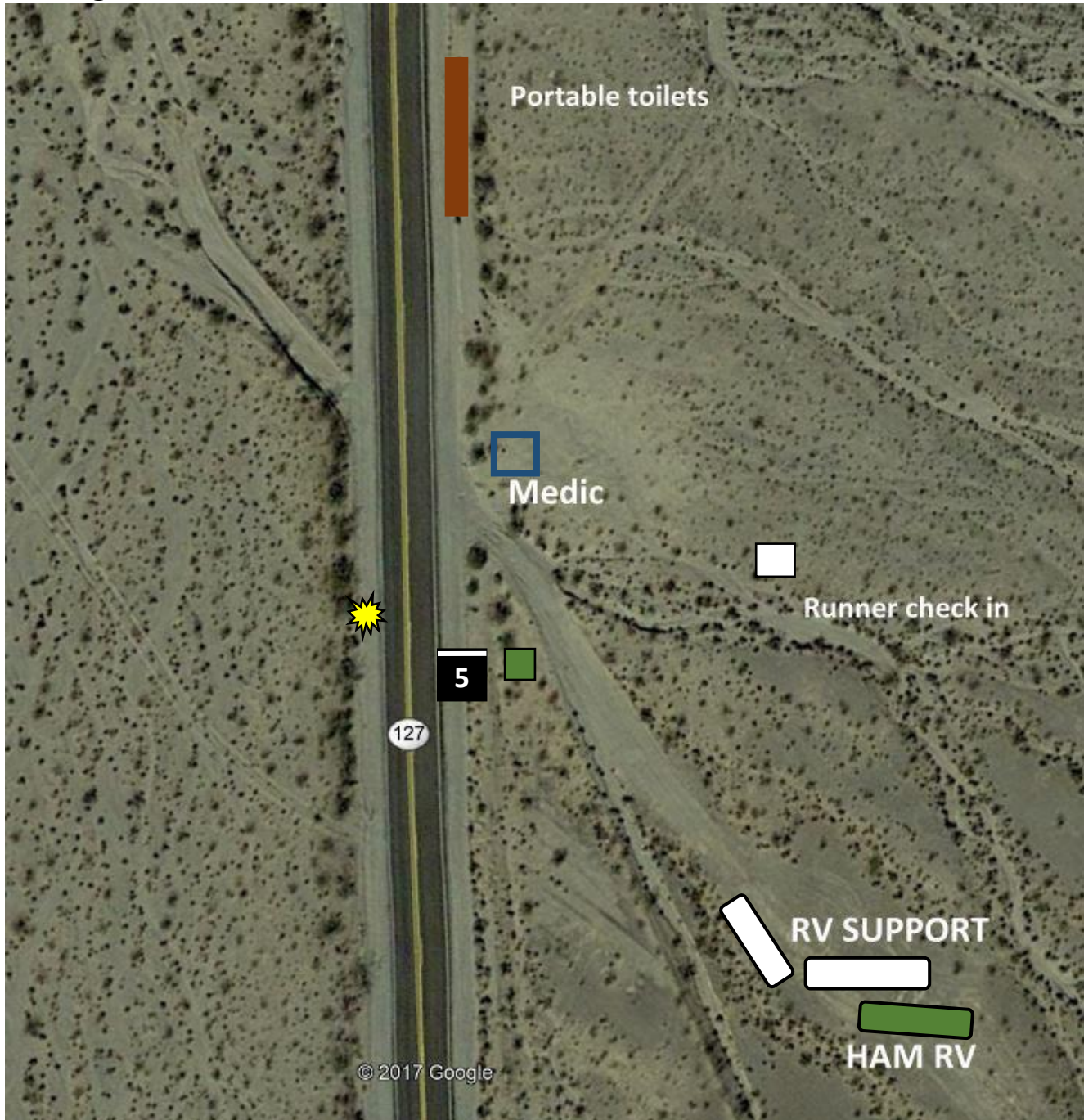


Stage 5

GPS: 35° 48.931 N & 116° 19.809 W

Stage distance: 6.1 miles

Stage 5 is about 43 miles north of Baker and 13 miles south of Shoshone



For 2022 a light tower will be delivered and set up. It appears that the best location to set up is directly across Highway 127 from the exchange point. The lights need to be adjusted before raising the tower so that they aim directly across toward the exchange point and the lights do not interfere with cars coming in either direction.

Stage 6

GPS: 35° 52.617 N & 116° 16.067 W

Stage distance: 6.1 miles

Stage 6 begins about 7 miles south of Shoshone,
and close to 50 miles north of Baker on Hwy 127.



Stage 7

GPS: 35° 57.687 N & 116° 16.074 W

Stage distance 6.2 miles

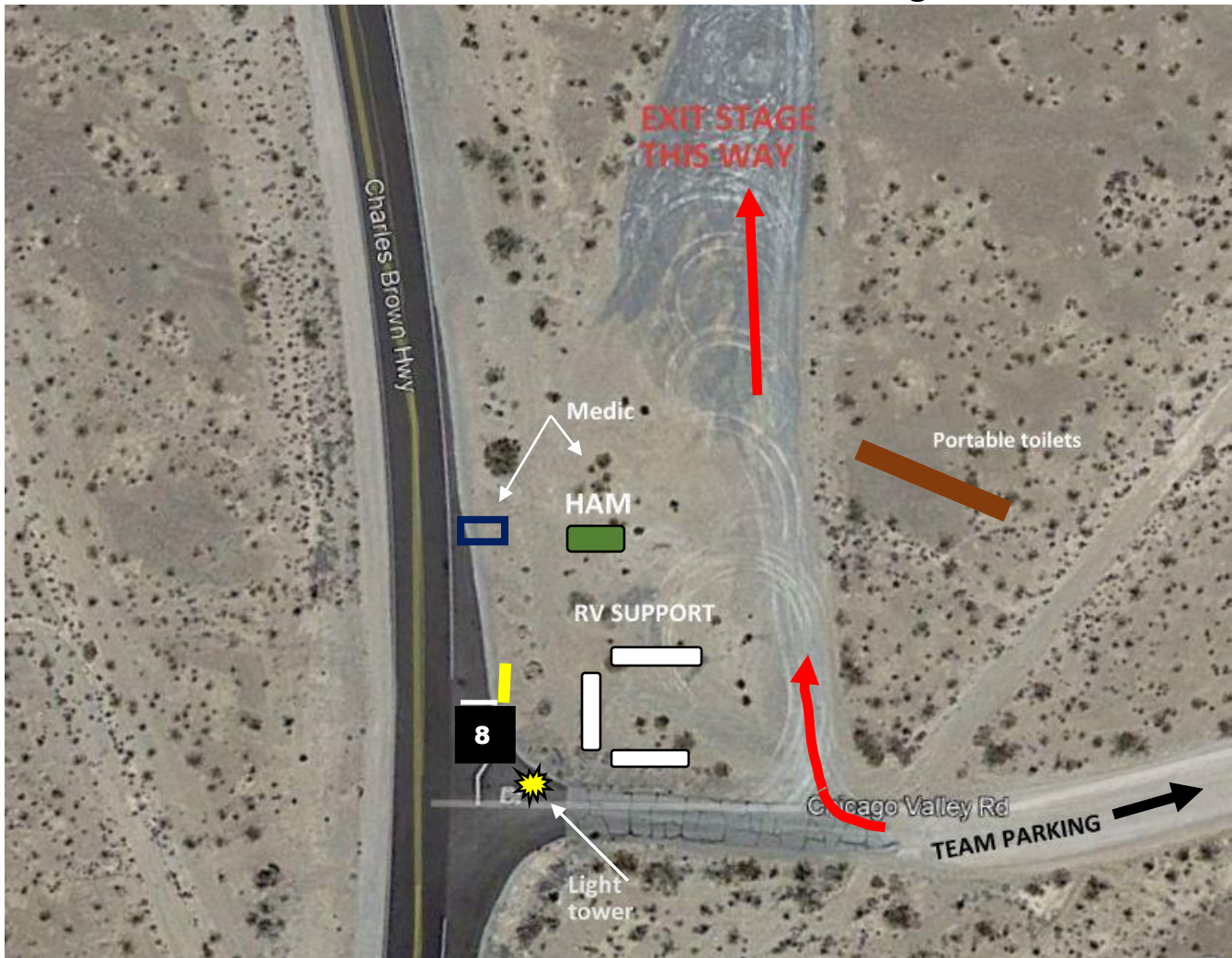
Stage 7 begins less than a mile south of Shoshone, about 30 miles from Pahrump



Stage 8

GPS: 36° 00.059 N & 116° 11.881 W

Stage distance: 6.6 miles



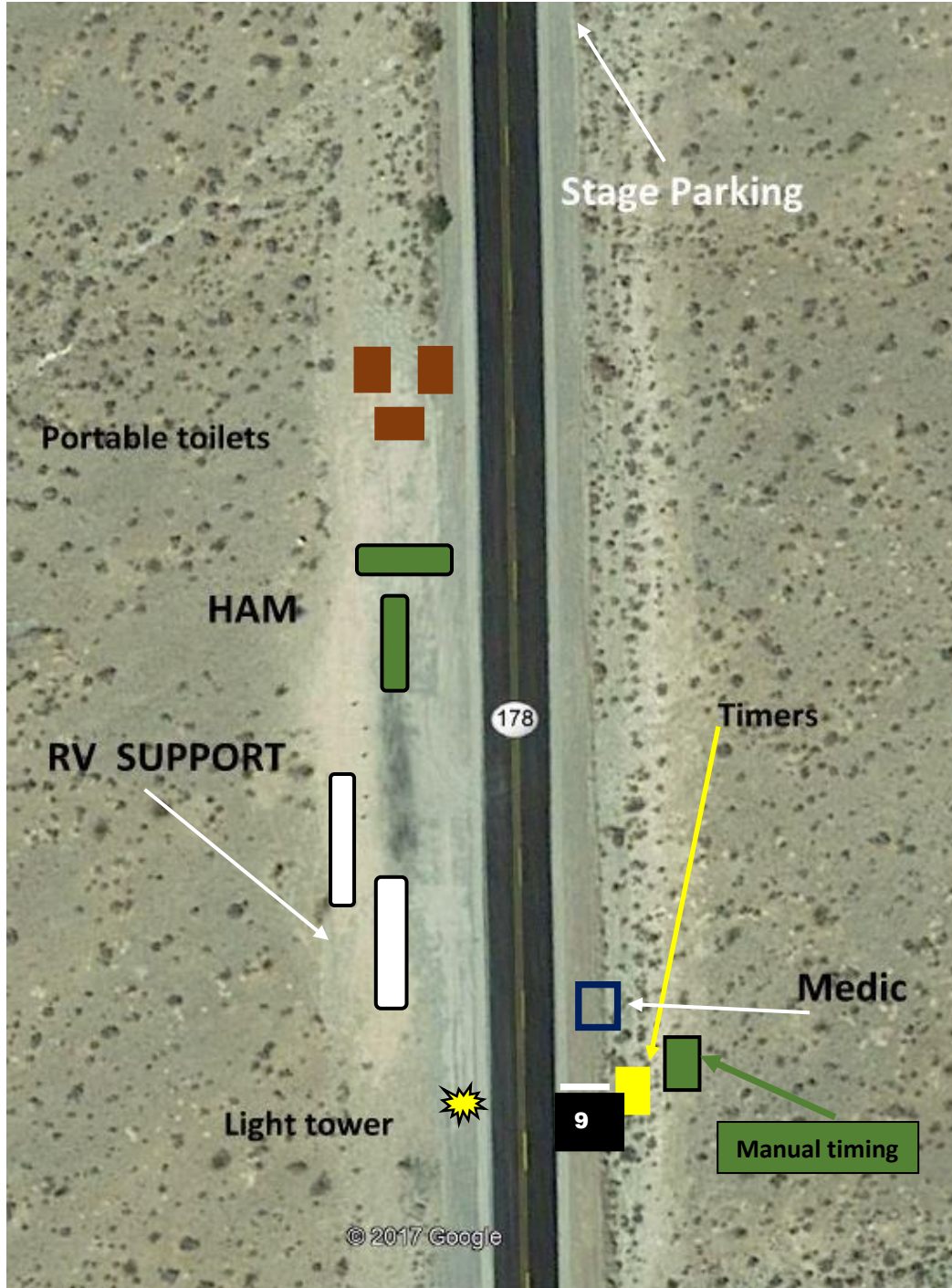
Stage 8 starts about 22 miles south of Pahrump on Highway 372/178, and 5.5 miles northeast of Shoshone on Highway 178

Stage 9

GPS: 36° 05.714 N & 116°11.038 W

Stage distance: 7.5 miles

Stage 9 begins about 15 miles south of Pahrump on Highway 372. Parking is along the highway and can be very congested



Stage 10

GPS: 36° 10.095 N & 116° 06.169 W

Stage distance: 5.8 miles



STAGE 11 map 1 of 2

GPS: 36° 12.300 N & 116° 00.745 W

Stage distance: 5.3 miles

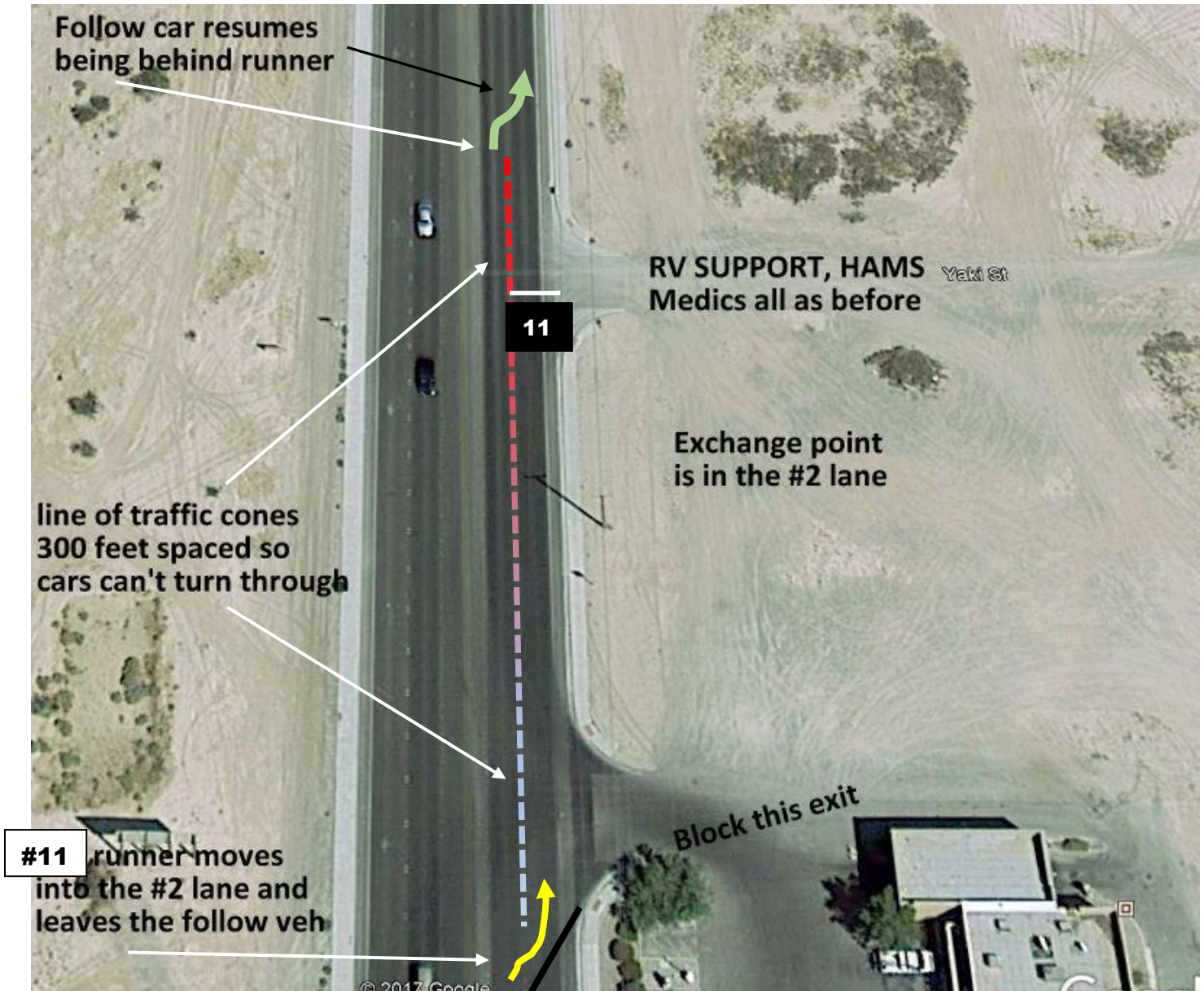
Highway 372 at Blagg Road, 1.5 miles south of Highway 160



The finishing Stage 11 runner route is in yellow. At point "A" the runner leaves the follow vehicle and enters the chute to the baton exchange. The follow vehicle remains in the #1 traffic lane and picks up the Stage 11 runner at point "B" at which time the follow vehicle returns to the rightmost shoulder lane. Please see Map 2 for a close-up view of the exchange point.

STAGE 11 map 2 of 2

Stage distance: 5.3 miles



The dotted line represents a line of traffic cones or delineators that will separate the #1 and #2 lanes. The Stage 11 runner will enter the #2 lane shown by the lower yellow arrow with the follow vehicle remaining in the #1 traffic lane. Where the cones end, the follow vehicle will move to the right shoulder and pick up the new (Stage 11) runner.

Stage 12

GPS: 36° 10.583 N & 115° 55.919 W

Stage distance: 4.7 miles

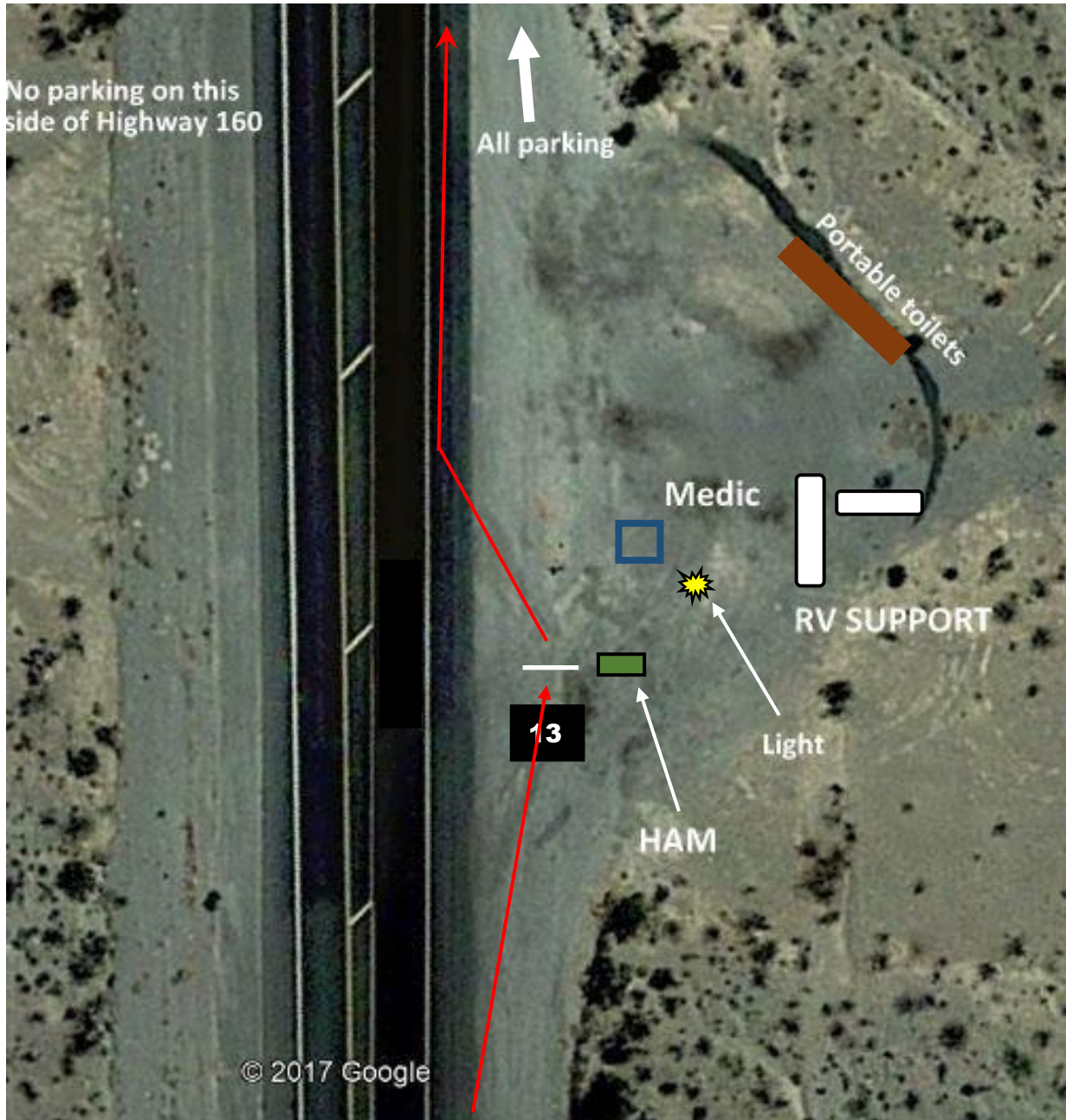
Stage 12 start is about 50 miles west of the I-15 on Highway 160
and 4 miles east of Pahrump



Stage 13

GPS: 36° 07.963 N & 115° 52.006 W

Stage distance: 6.9 miles



All runner parking is east of the exchange point. No parking across highway 160 or before the stage. This stage starts about 8 miles east of Pahrump and 44 miles west of Interstate 15 on Highway 160.

STAGE 14

GPS: 36° 04.383 N & 115° 46.138 W

Stage distance: 10.7 miles



The exchange point area has been re-graded with an E/B 160 right turn lane added. This Google Earth view from 2016 is not representative of the current terrain. The small green square represents the timers and the blue square are the medics. There is now barely room for two small vehicles in this red-circled area.

Stage 15

GPS: 36° 00.357 N & 115° 36.369 W

Stage distance 6.4 miles



Green square, above, represents timers and the blue square are the medics

Stage 16

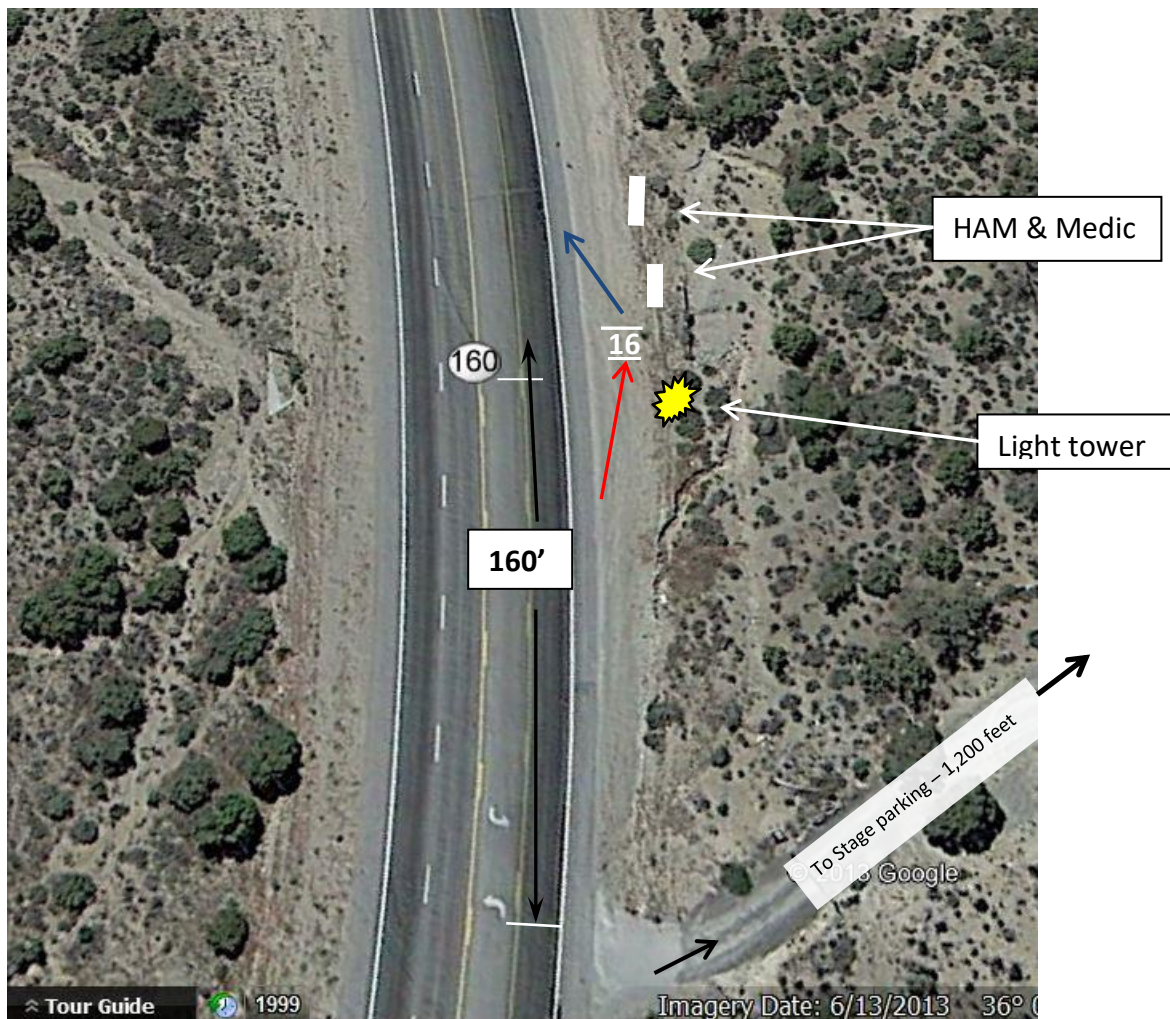
GPS: 36° 00.773N; 115° 29.962W

Stage distance 5.8 miles

Elevation: 5472 feet

Map 1 of 2

NO HIGHWAY STOPPING OR PARKING



This will be a very challenging baton hand-off place. **It is critically important that nothing causes the follow vehicle to move to the left even partially out of the shoulder "lane."**

The incoming runner will have to negotiate a sloping downhill entry into the chute and the outgoing runner will have to negotiate a sloping uphill back onto the shoulder. Incoming runner path shown in **red**, outgoing runner path shown in **blue**. The length of both incoming and outgoing chute will have to be very short. The team catcher, medics, and HAM will all be crowded into a small space. Runners awaiting their turn to run must be very alert. Also, the lights from the light tower have to be pointed mostly downward and not toward highway traffic approaching from either direction.

Stage 17

GPS: 36° 00.850 N & 115° 25.413W

Stage distance: 8.3 miles



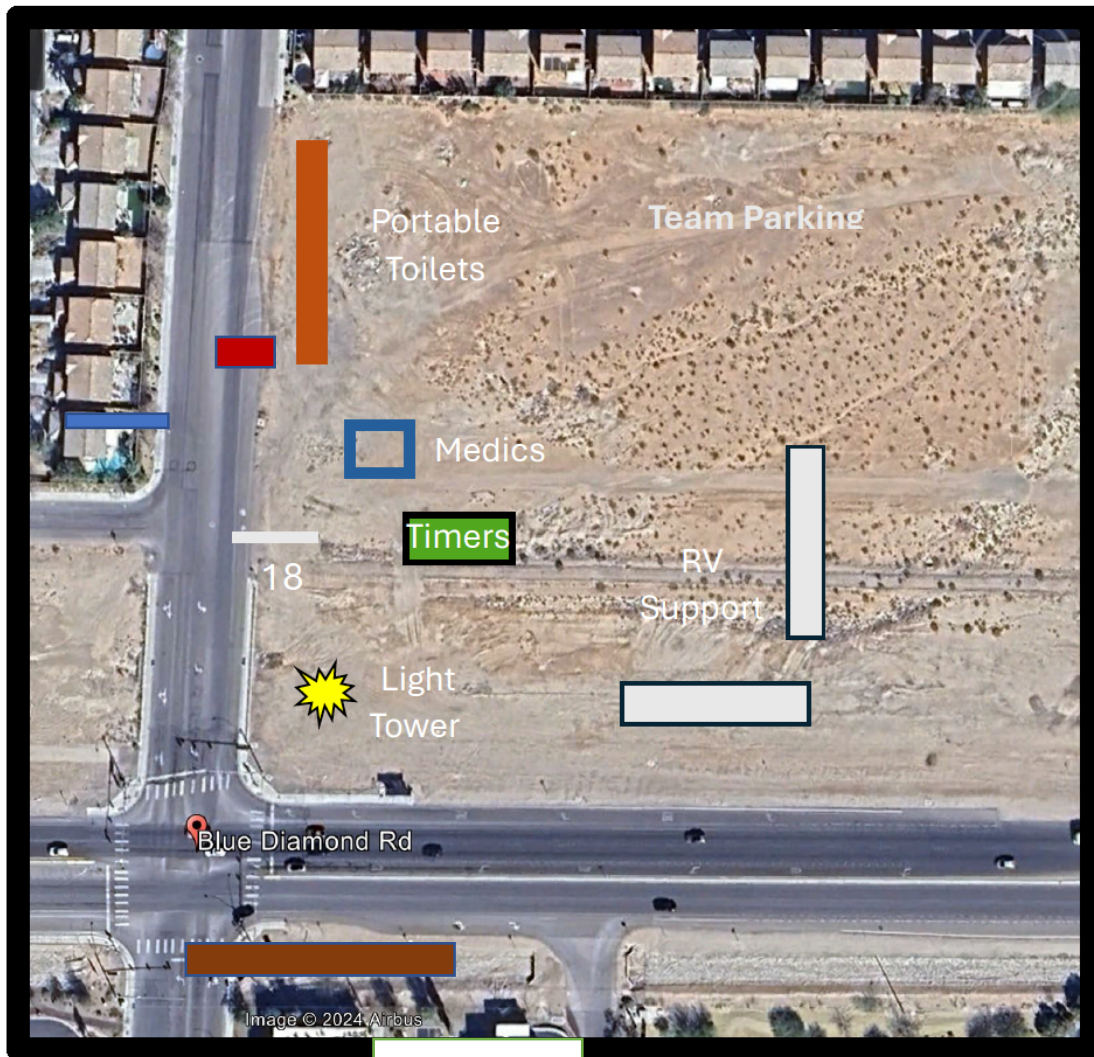
Stage 17 runners and support vehicles coming from Las Vegas must continue west on Highway 160 for about ½ mile beyond the stage to the “Late Night Trailhead” turnaround, make a U-turn in the parking lot and return E/B to the stage start.

Stage 18

GPS: 36 01'15"N & 115 17'18"W

Stage Distance 6.3 miles

Stage is at N/E Corner of S. El Capitan Way & Blue Diamond Rd



Stage 19

GPS: 36° 06.276 N & 115° 17.814 W

Stage distance: 5.6 miles

4670 South Fort Apache Road

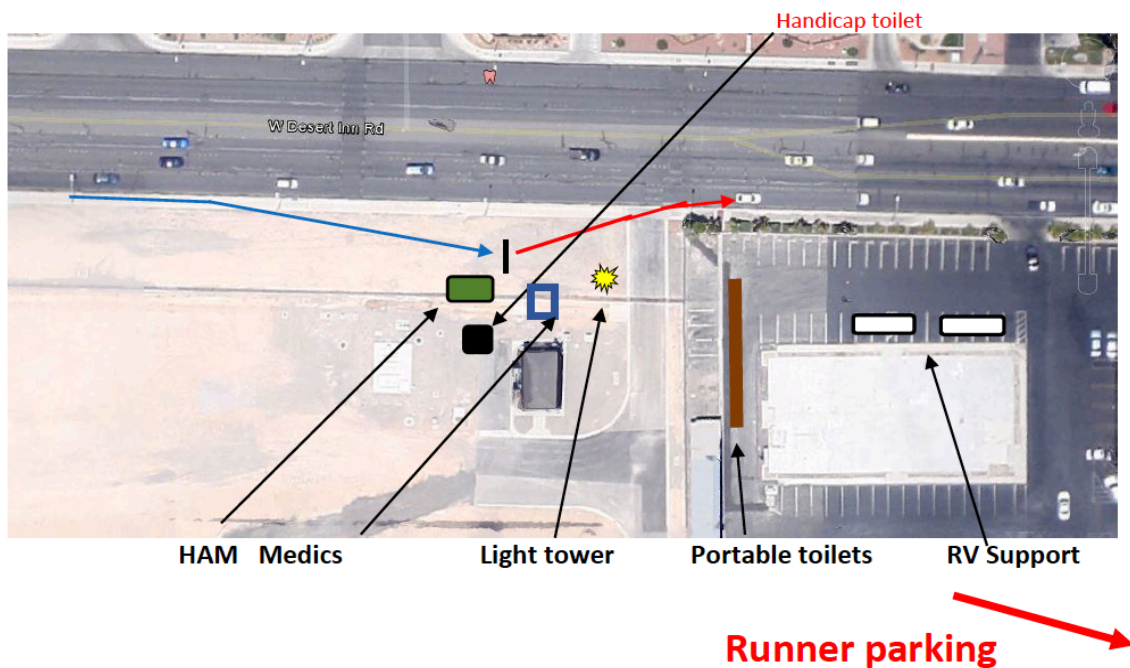


Stage 20

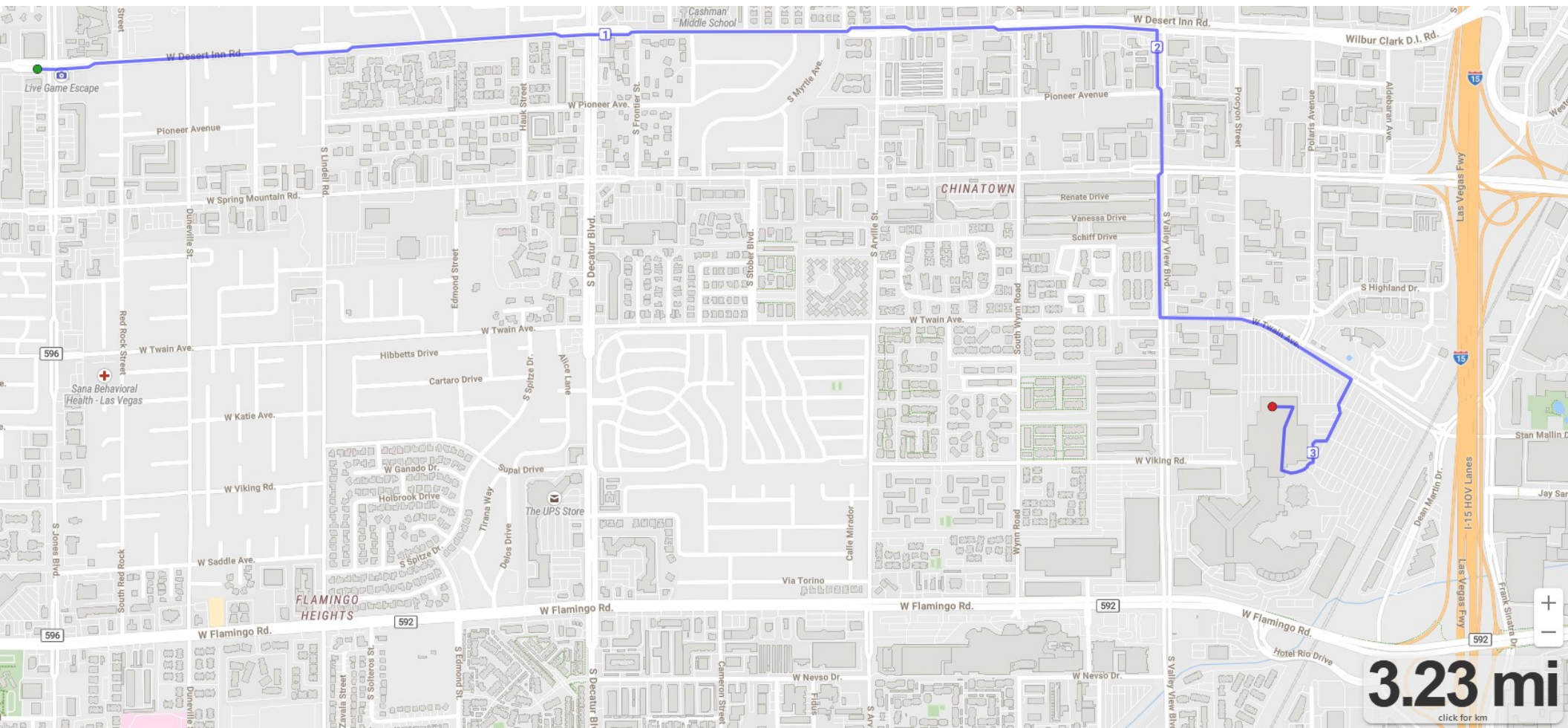
GPS: 36°07.740 N & 115°13.620 W

Stage length: 3.2 miles

Stage is on Desert Inn at Jones Ave



The only vehicles to park on the dirt near the exchange point are those of the Medics. The driveway and gate to the Las Vegas Water District needs to be kept clear of parked vehicles. The incoming, or Stage 19, runner is to be directed onto the sidewalk and the intersection before the exchange point. The exchange chute is to be set up on the dirt lot and not on the sidewalk. After the Stage 20 runner gets the baton he exits the dirt lot using the driveway.



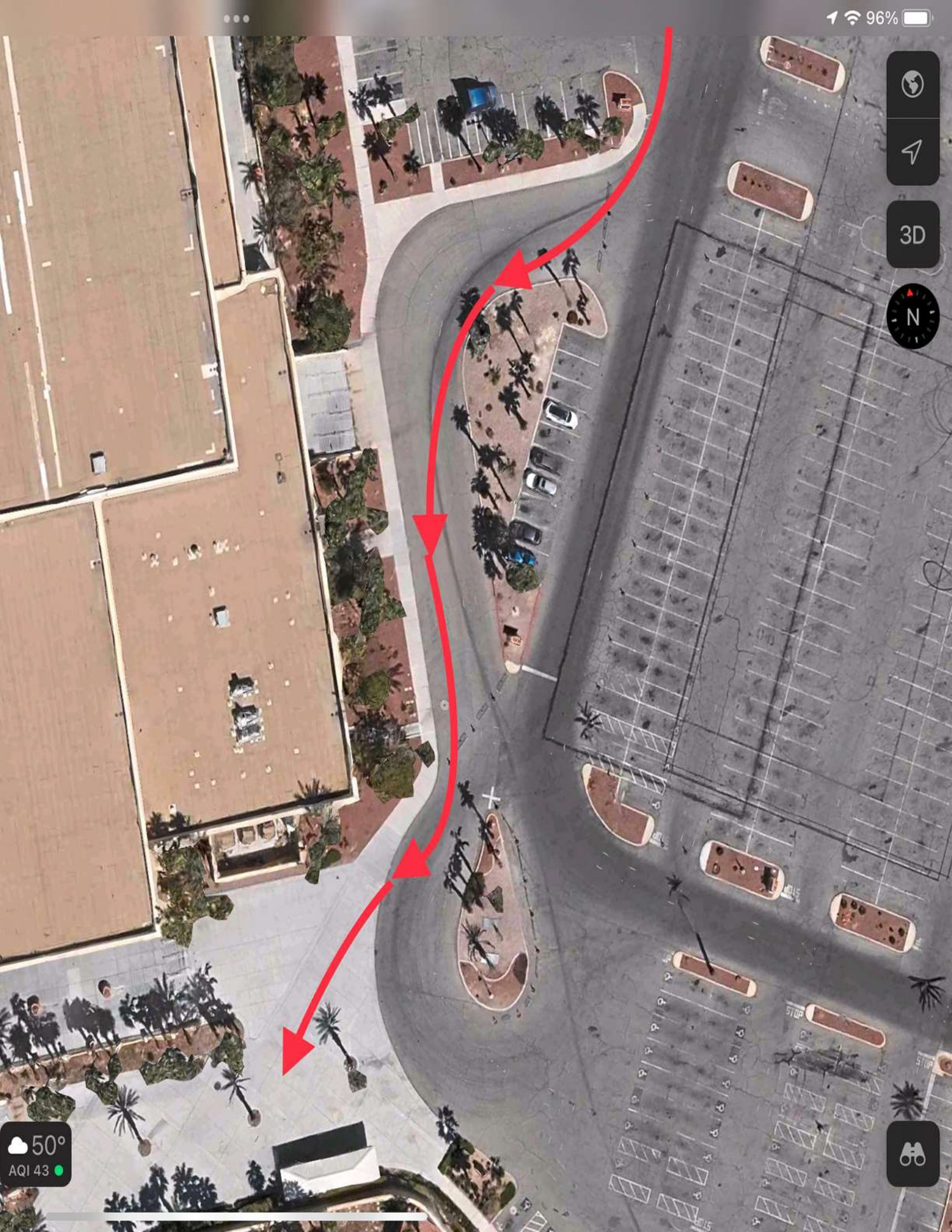


Close gate to
employee parking
lot

Close small
parking lot and
loading dock
access

Follow Vehicle Route to Park

Runner Route



Rio Hotel & Casino

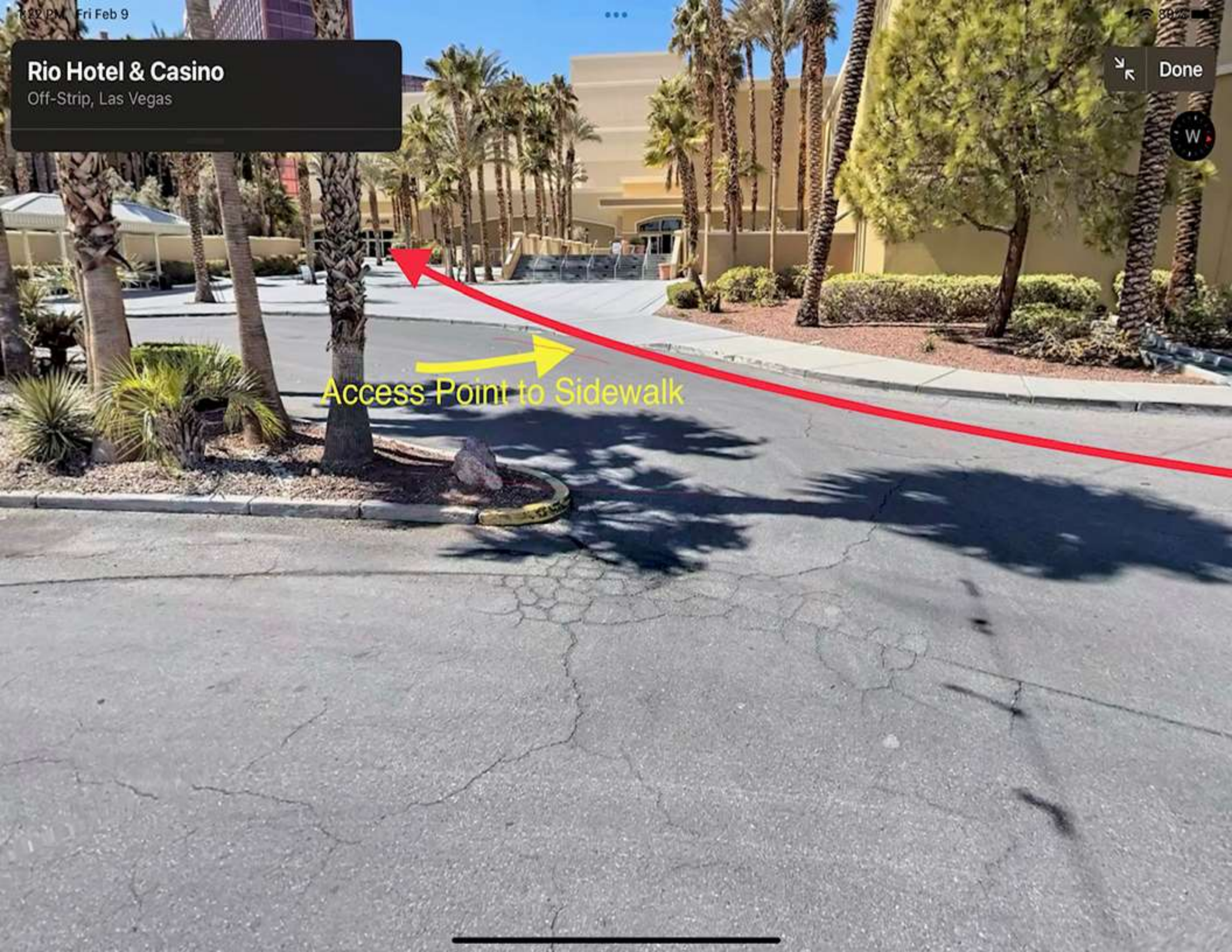
Off-Strip, Las Vegas



Done



Access Point to Sidewalk



Rio Hotel & Casino

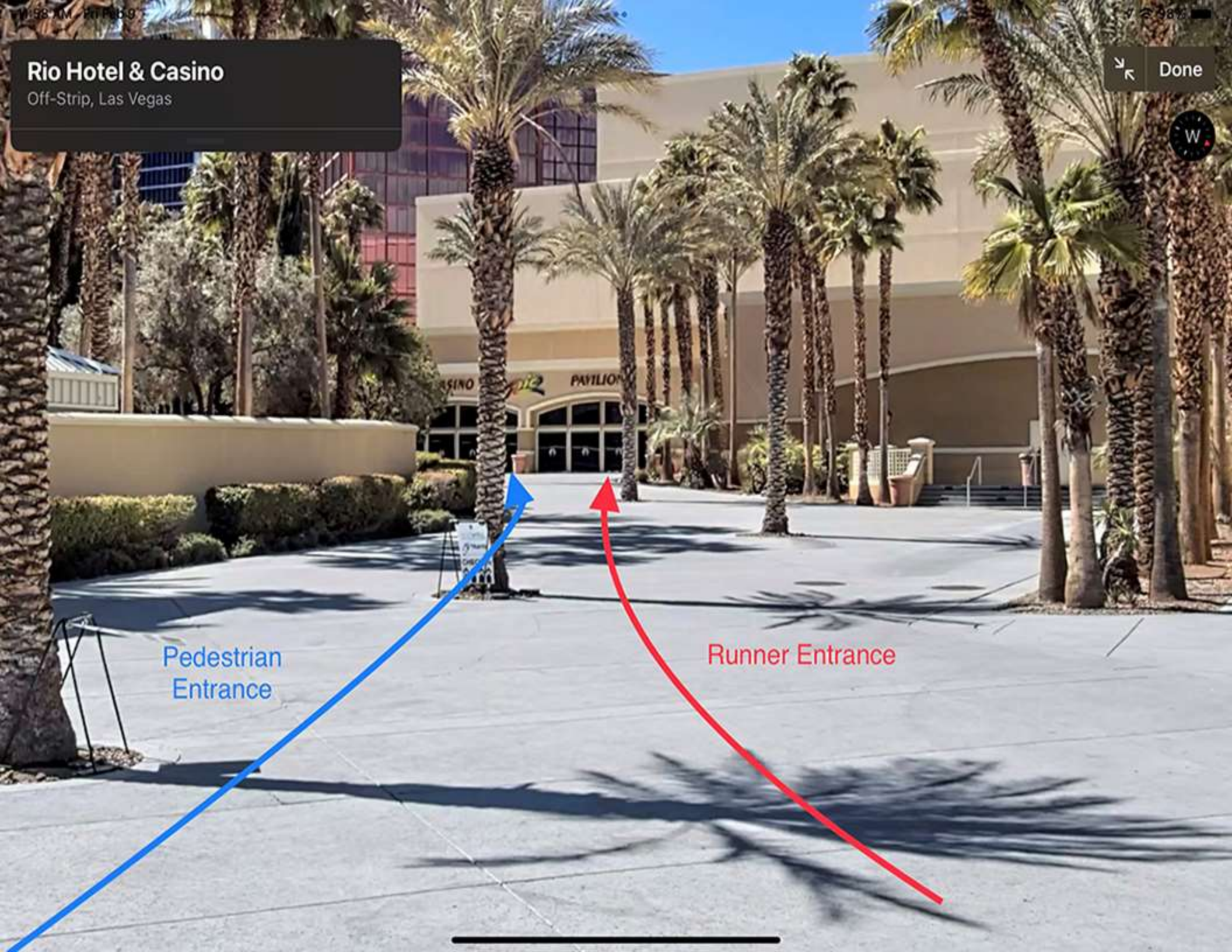
Off-Strip, Las Vegas

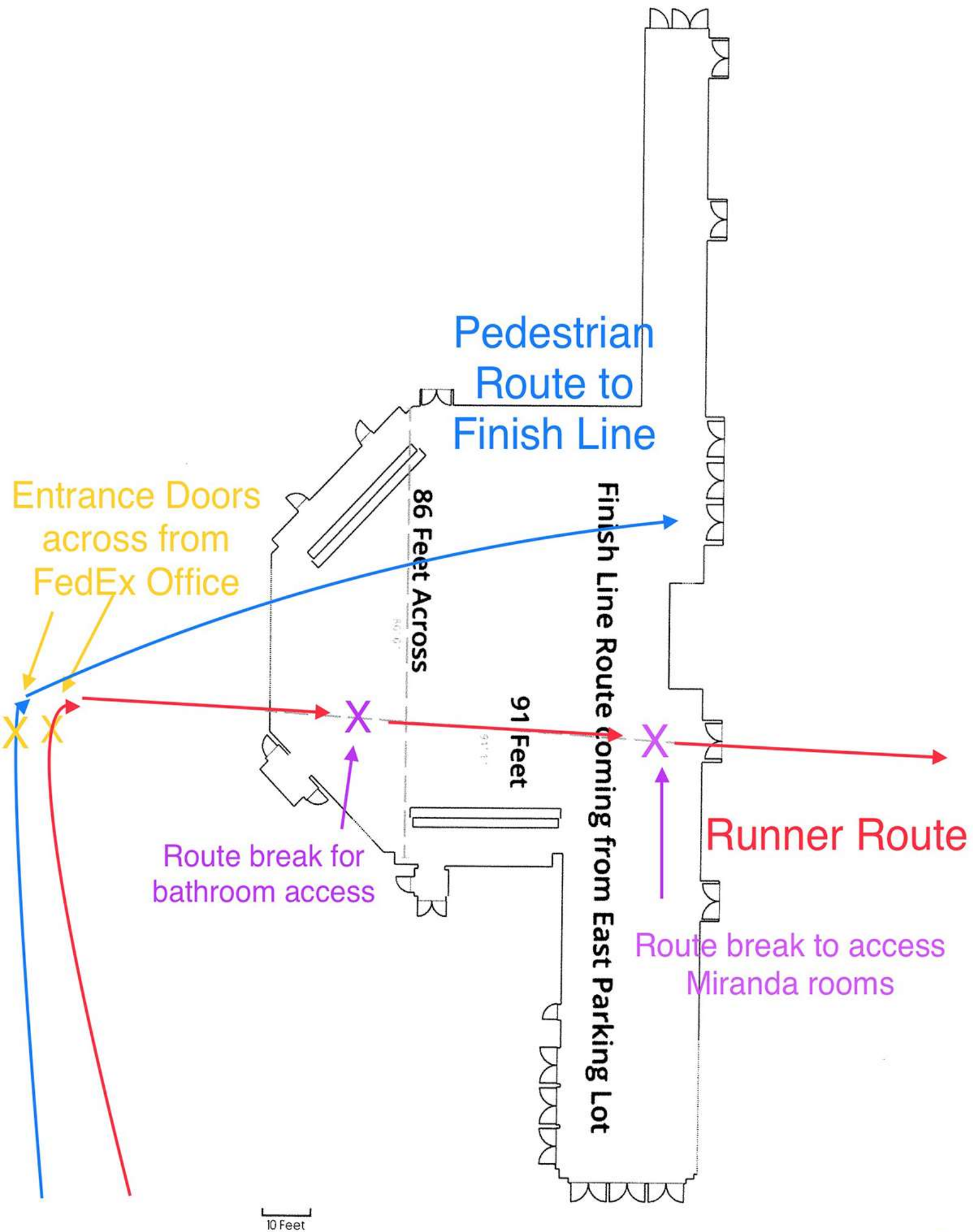
Done

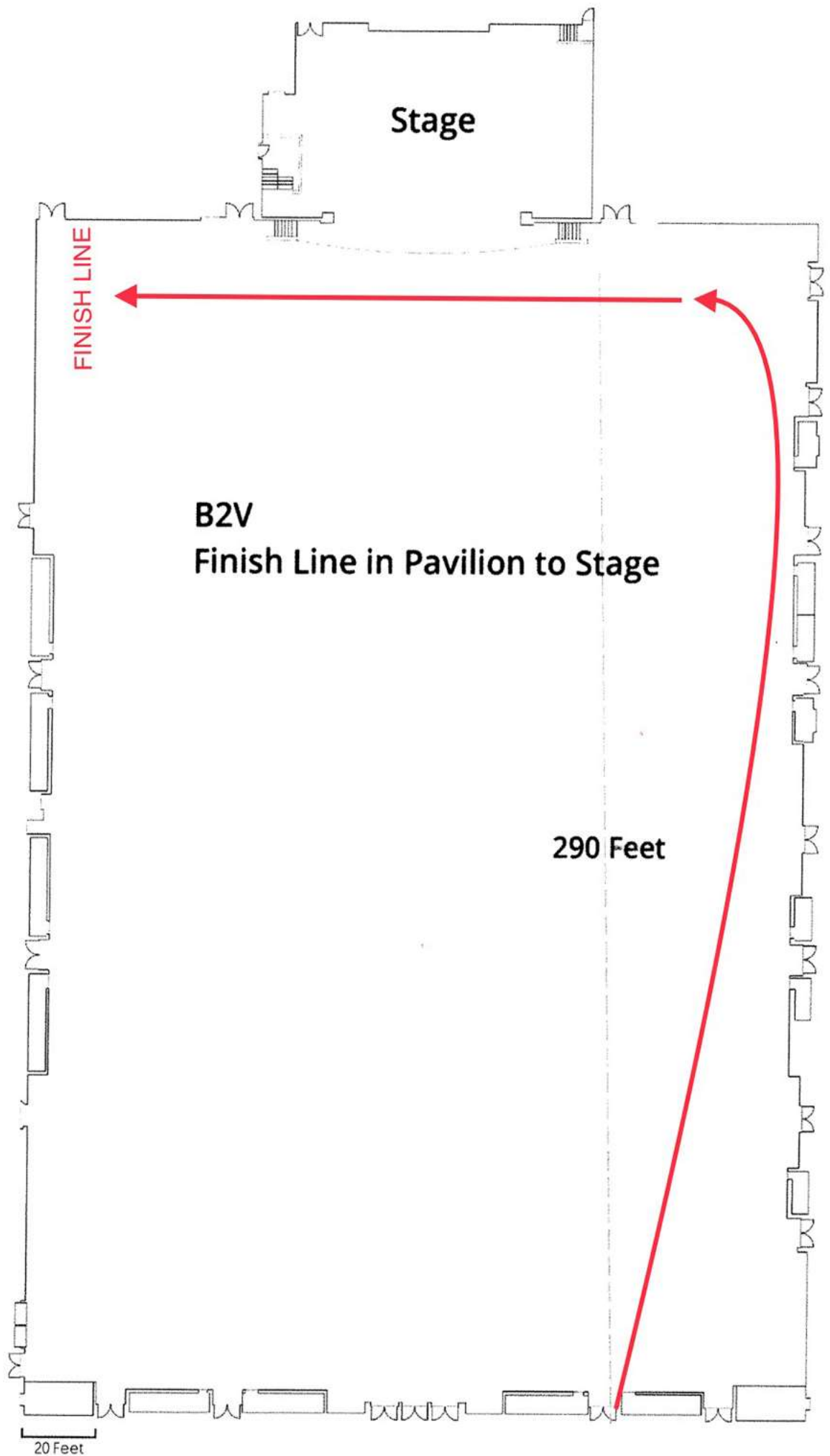


Pedestrian
Entrance

Runner Entrance







IBEX PASS SUMMIT COMMUNICATION SITE LAYOUT

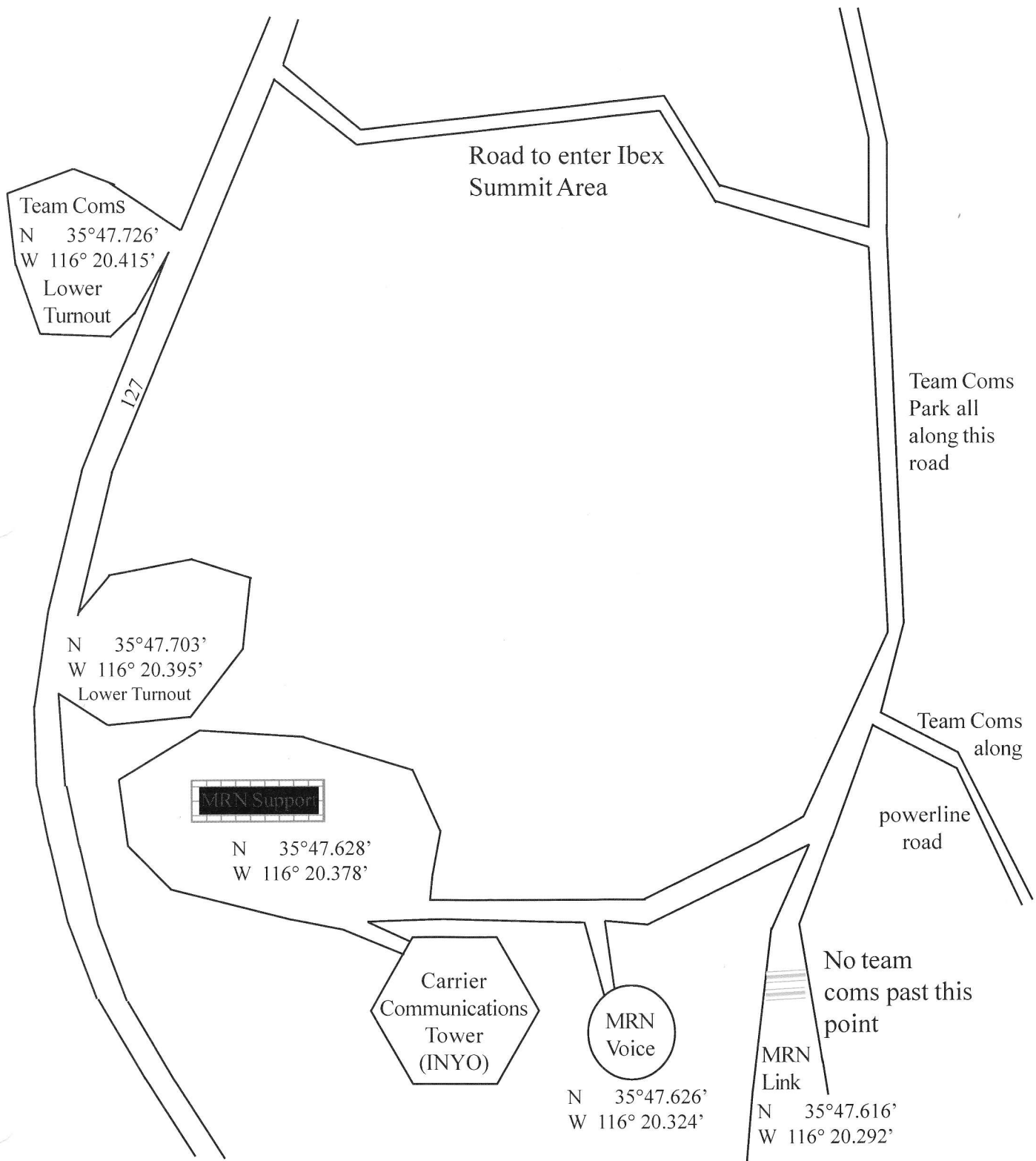


DIAGRAM NOT TO SCALE REVISED: 3/12/14
SUPERCEDES ALL PREVIOUS VERSIONS

IBEX PASS SUMMIT GPS Coordinates

EAST ENTRANCE

Reference Location Only

35° 48.088' N
116° 20.271' W

The entrance is just beyond the .5 mile marker and right before you reach the 60 mph speed limit sign as you are traveling north on Hwy 127.

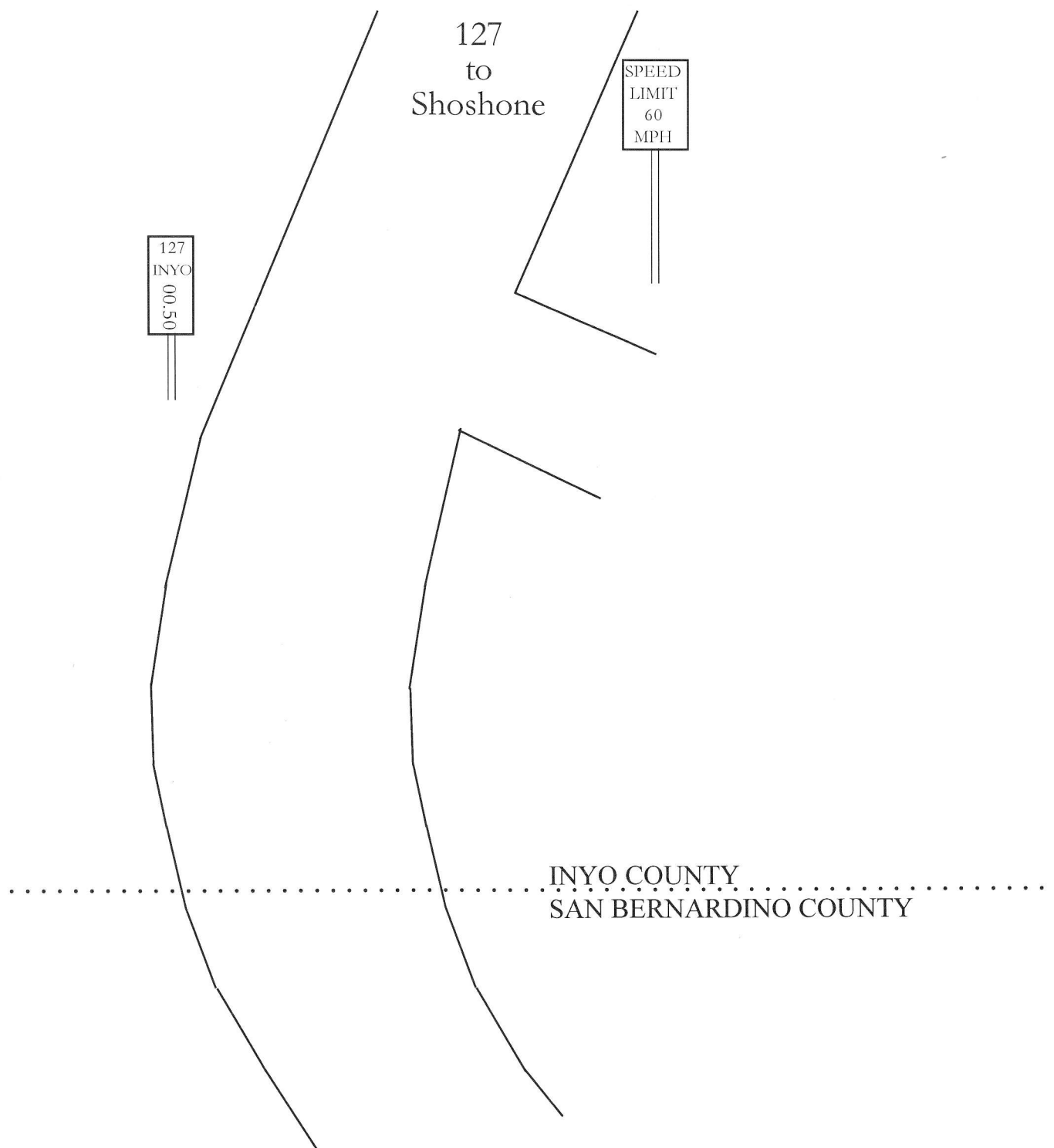


DIAGRAM NOT TO SCALE REVISED: 3/12/14
SUPERCEDES ALL PREVIOUS VERSIONS