

Stage 16

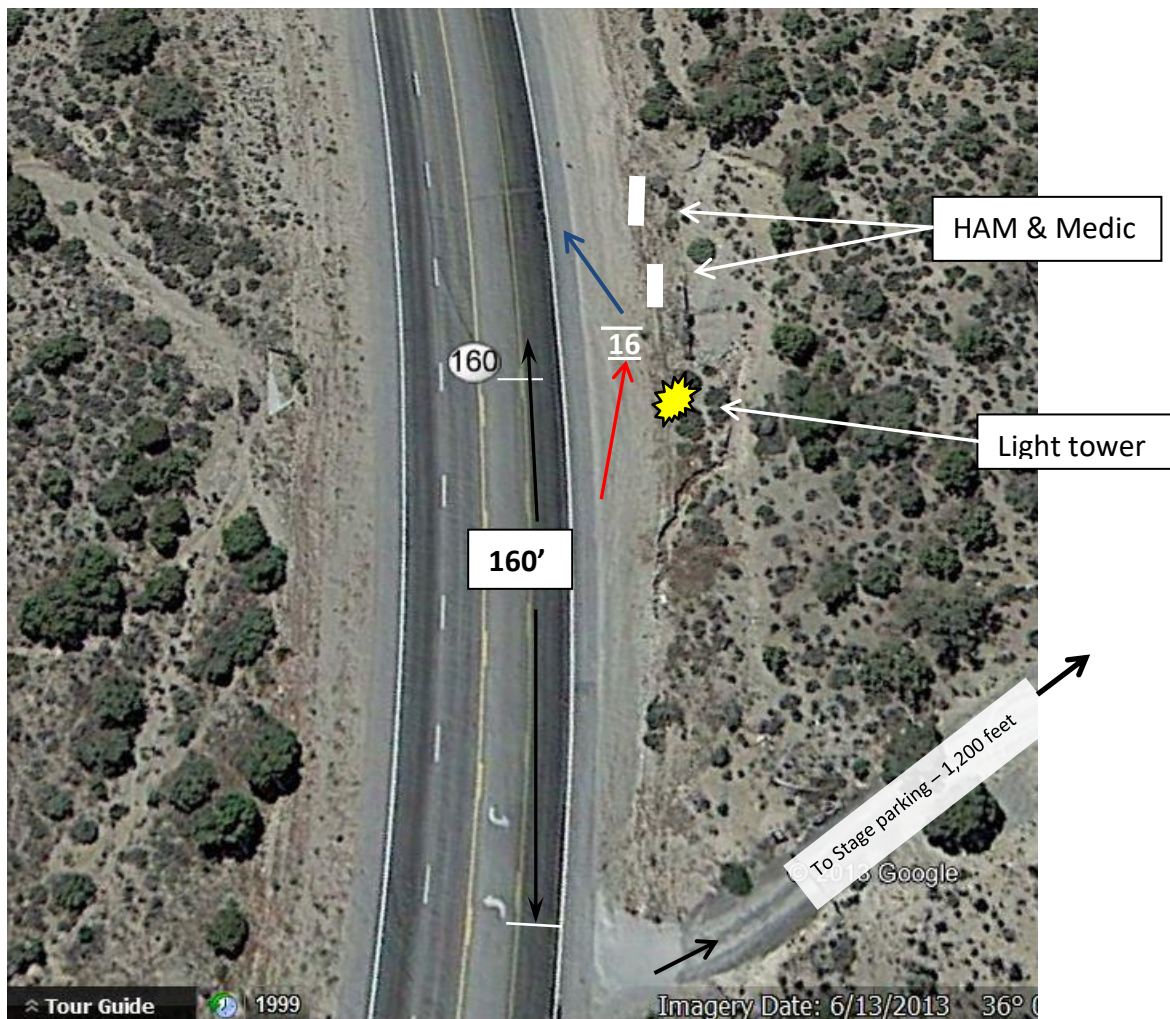
GPS: 36° 00.773N; 115° 29.962W

Stage distance 5.8 miles

Elevation: 5472 feet

Map 1 of 2

NO HIGHWAY STOPPING OR PARKING



This will be a very challenging baton hand-off place. **It is critically important that nothing causes the follow vehicle to move to the left even partially out of the shoulder "lane."**

The incoming runner will have to negotiate a sloping downhill entry into the chute and the outgoing runner will have to negotiate a sloping uphill back onto the shoulder. Incoming runner path shown in **red**, outgoing runner path shown in **blue**. The length of both incoming and outgoing chute will have to be very short. The team catcher, medics, and HAM will all be crowded into a small space. Runners awaiting their turn to run must be very alert. Also, the lights from the light tower have to be pointed mostly downward and not toward highway traffic approaching from either direction.