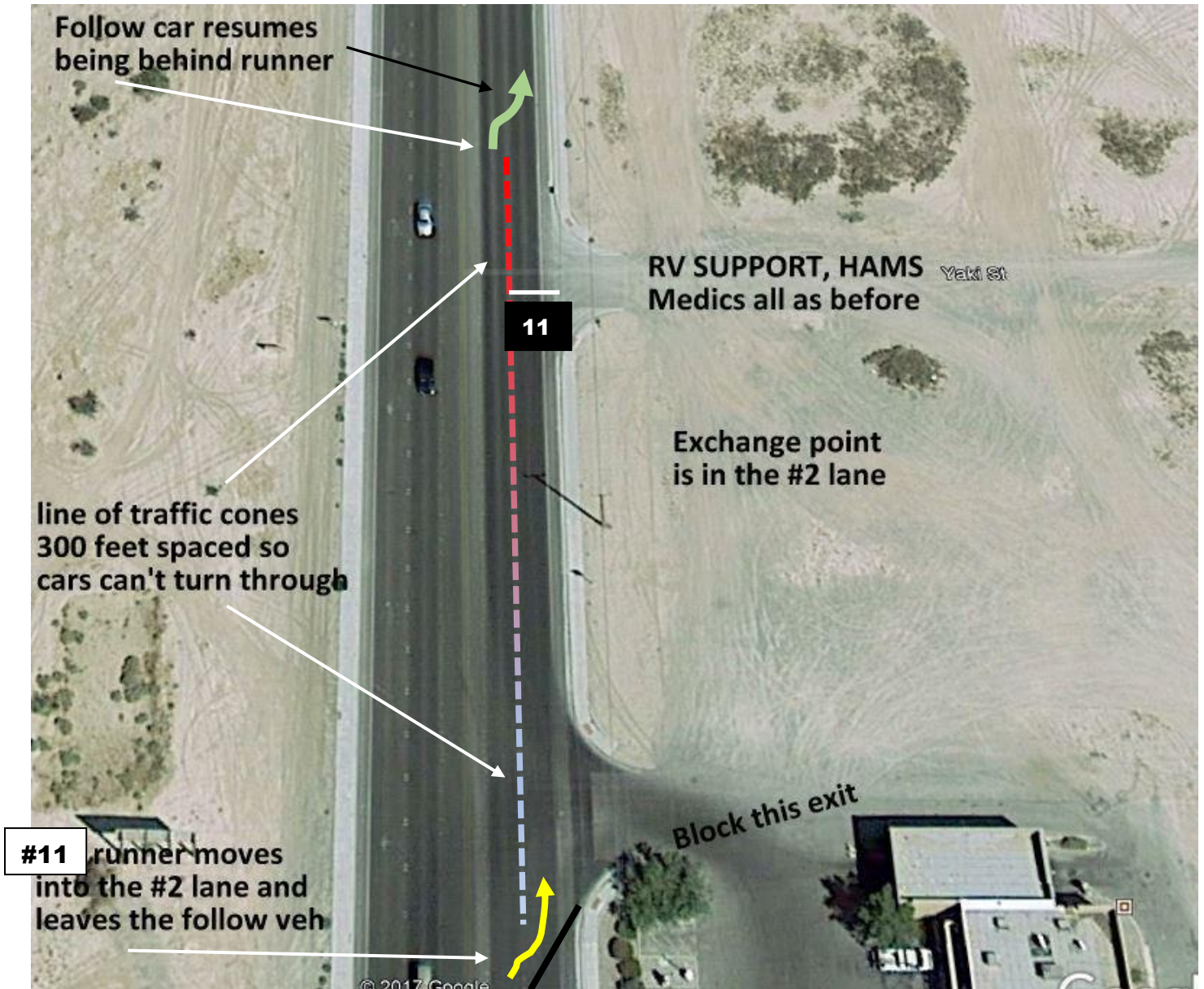


STAGE 11 map 2 of 2 for 2022
Stage distance: 5.3 miles



The dotted line represents a line of traffic cones or delineators that will separate the #1 and #2 lanes. The Stage 11 runner will enter the #2 lane shown by the lower yellow arrow with the follow vehicle remaining in the #1 traffic lane. Where the cones end, the follow vehicle will move to the right shoulder and pick up the new (Stage 11) runner.