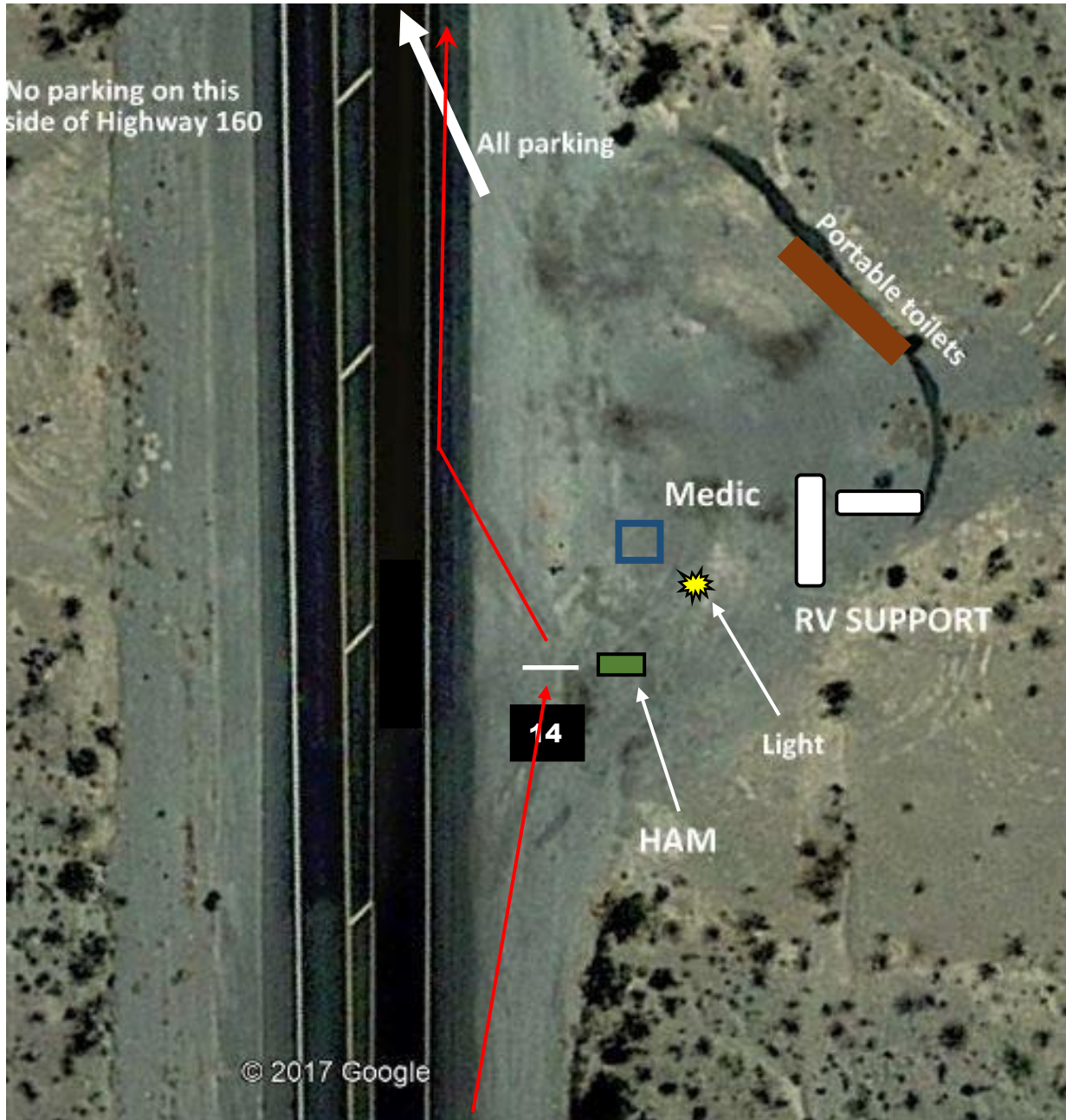


**Stage 14 dated March 8, 2019**

GPS: 36° 07.963 N & 115° 52.006 W

Stage distance: 6.9 miles



All runner parking is on the **LEFT SHOULDER OF THE NEW EASTBOUND LANES WITHIN THE CONSTRUCTION AREA**, east of the exchange point. No parking across highway 160 or before the stage. This stage starts 8 miles east of Pahrump and 44 miles west of Interstate 15 on Highway 160. The runner and follow vehicle only will be in the right lane, as shown by the red line. See "Parking Overview" map for additional info.