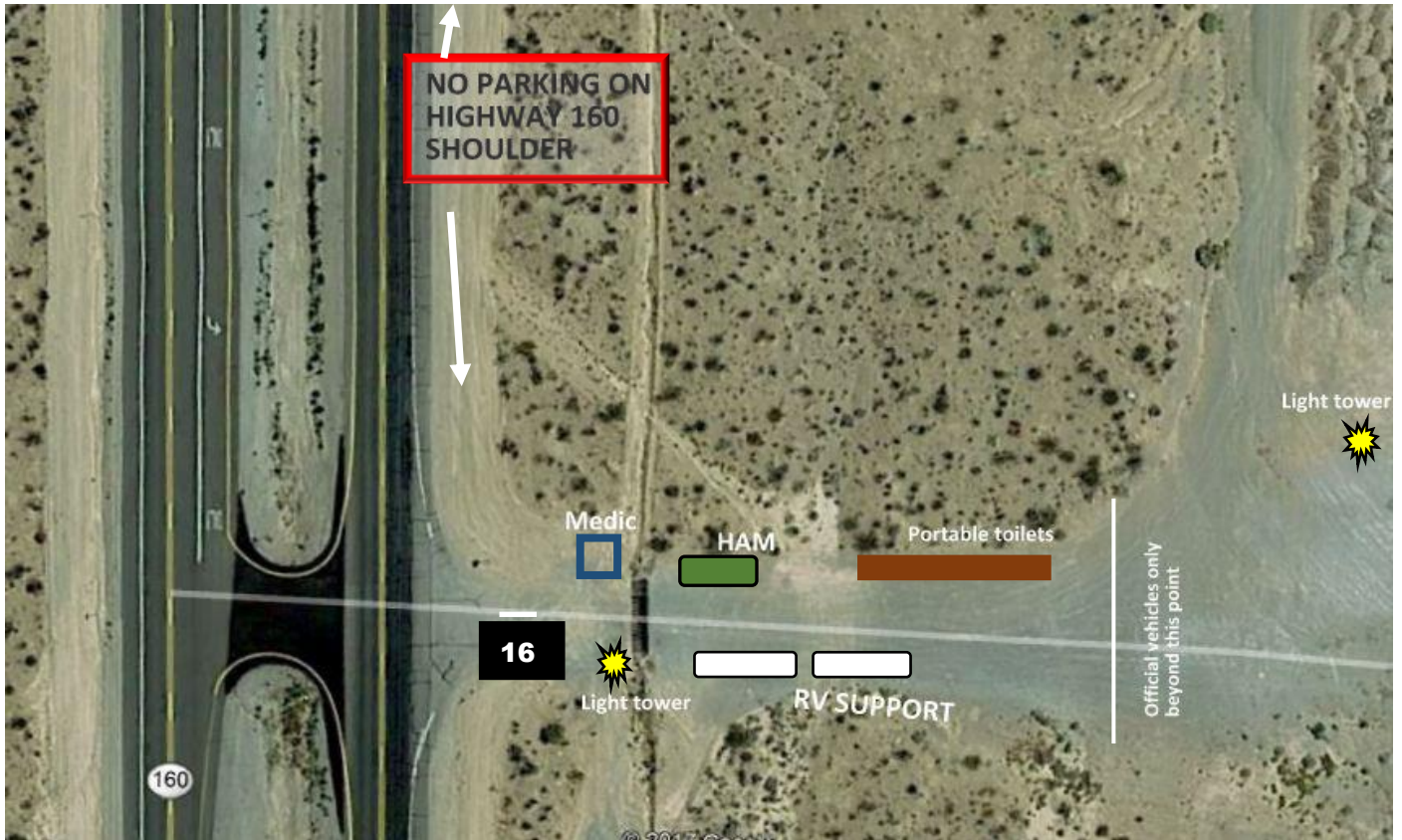


Stage 16 for 2019

GPS: 36° 00.357 N & 115° 36.369 W

Stage distance: 6.4 miles



THERE IS NO HIGHWAY PARKING AT STAGE 16

Stage 16 start is ½ mile west of Sandy Valley Road – enter the stage on Sandy Valley Road. Sandy lies east of Pahrump. See map #2 for parking information. Valley Road is about 25 miles west of the I-15 on Highway 160 and about 25 m