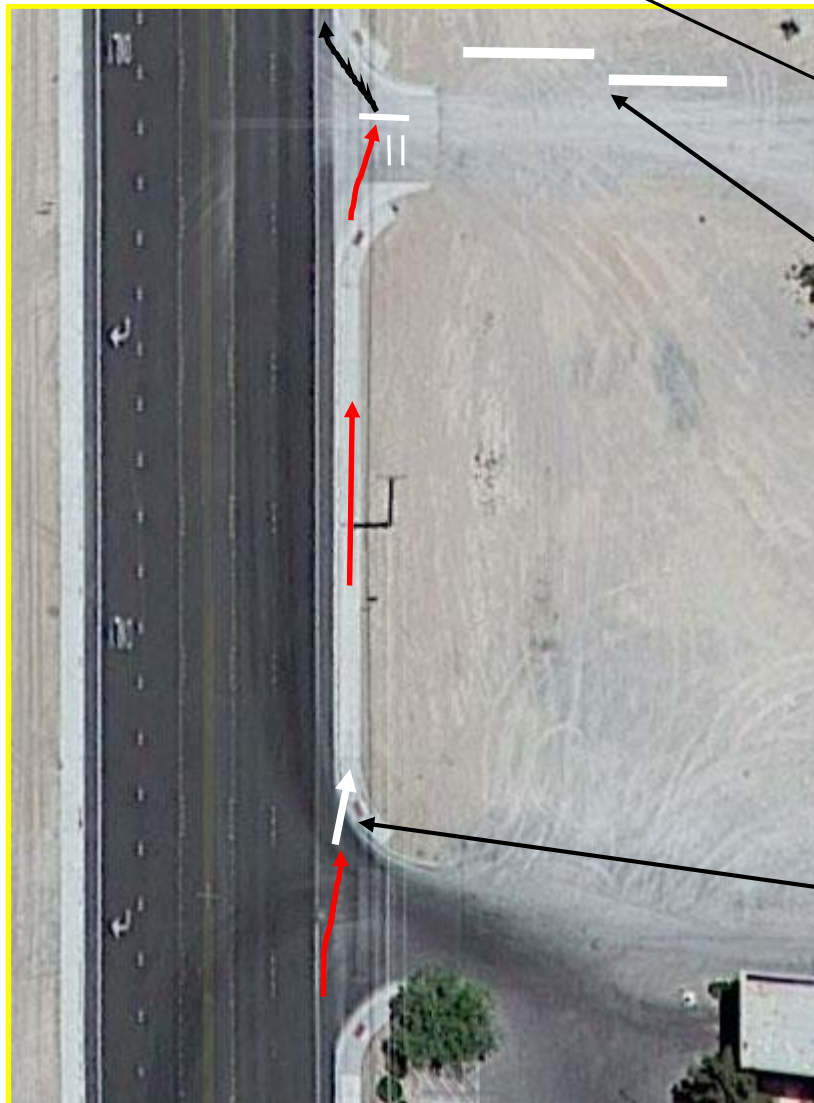


Stage 11, 2015

GPS: 36°12.300 N & 116°00.745 W

Stage distance 5.3 miles

Highway 372 and Blagg Road



Portable
toilets, this
direction

RV Support

Sidewalk is
180' from gas
station to
exchange

**DO NOT PUT
ANY CONES
OR
DELINEATORS
IN THE
ROADWAY!!**

Chalk arrow

The Stage 10 runner (red path) is directed onto the sidewalk at the last driveway of the gas station. Runner stays on the sidewalk and exchanges the baton with the Stage 11 outgoing runner (black path). The Stage 11 runner then returns to the normal running lane between the curb and fog line. This is being done so that the follow vehicle does not have to move left into the # 2 lane.

Station a volunteer officer full time to direct runner up onto the sidewalk.